



hotel nikko changshu

常熟日航酒店

OUR BRAND

Okura Nikko Hotel Management Co., Ltd. a subsidiary of Hotel Okura Co., Ltd, is a hotel operating company with three chains. Integrating the Hotel Okura's philosophy of "O-mo-te-na-shi" (Japanese hospitality) that has long captivated the world, with the global hotel operator expertise of JAL Hotels, the company has been trying and will establish a solid position as a global hotel operator with a Japanese tradition.



Okura Hotels & Resorts

- 16 hotels in Japan
- 9 hotels overseas



Nikko Hotels International

- 22 hotels in Japan
- **16** hotels overseas



Hotel JAL City

- 15 hotels in Japan
- 1 hotel overseas

OUR MEMBERSHIP

Discover a World of Elegance and Refinement in Our Membership Program - **One Harmony (OHM)**, experience the ultimate hospitality in Japan and around the world. OHM member can earn and redeem points, enjoy member-exclusive benefits when staying at Okura Hotels & Resorts, Nikko Hotels International and Hotel JAL City hotels.

[Join us now for free.](#)

- **Earn Points**

Points are earned each time you enjoy the facilities or services of a participating hotel, restaurant or bar. The more points you earn, the higher your membership status.

- **Redeem Points**

Redeem your One Harmony Points for a variety of services and quality gift items.

- **Special Offers**

Room, Food & Beverage discount, Room upgrade awards, Special offer for birthday and etc.

- **JAL Mileages**

JAL Mileage Bank (JMB) Members can earn bonus miles for an eligible rate plan (J-SMART).



One Harmony

OUR HOTELS IN CHINA

Macau | Dalian | Shanghai | Suzhou | **Changshu** | Taizhou | Wuxi | Xiamen | Taiwan | Chengdu



The moment you step through the door, you know you've arrived. You're at the heart of the city, where it all happens.
This is a place where even the familiar can become new, vibrant and fresh.

 **Hotel Nikko Changshu will lead you to start wandering in Changshu**

WANDERING IN CHANGSHU

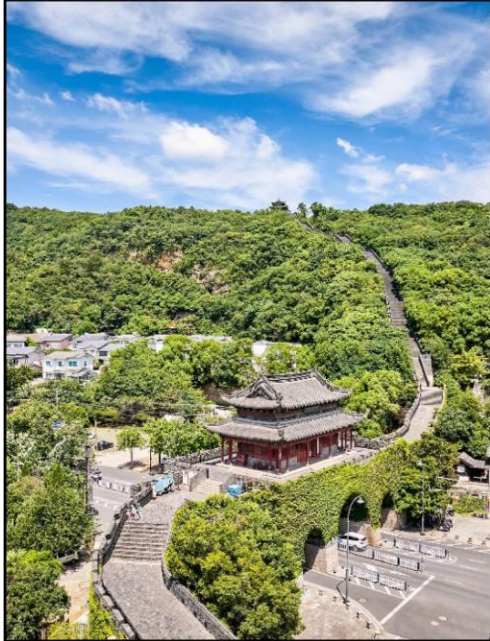
Discover · Inspired · Getaway



Changshu, is a county-level city under the jurisdiction of Suzhou, Jiangsu province, and is part of the Yangtze River Delta. Due to the mild climate and terrain there, it has enjoyed a high level of agriculture civilization since ancient times, and is named after this, for the first character of its name (常) means "always, often", while the second (熟) means "ripe".

WANDERING IN CHANGSHU

Discover · Inspired · Getaway



Yushan Scenic
25mins drive

Lying in the northwest of Changshu, Yu mountain borders the Yangtze river in the north and shang lake in the south. It is named after the death of yu zhong (also known as zhong yong), the ancestor of jiang nan, who was buried there during the shang and zhou dynasties.



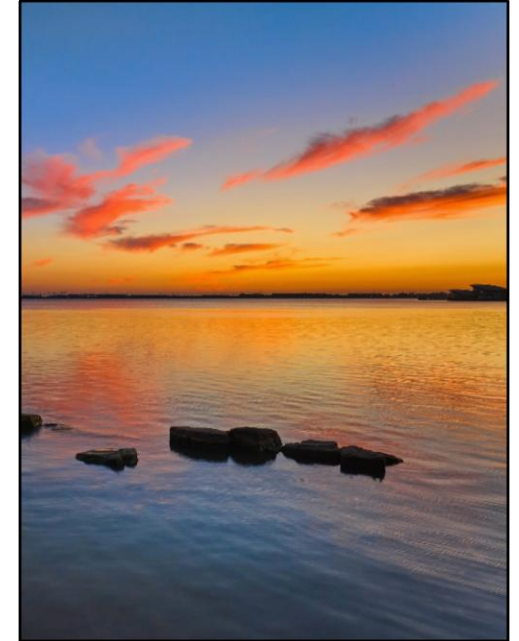
Shanghu Scenic
16mins drive

Shanghu is said to be named after Jiang Shang who lived in seclusion from tyranny of King Zhou in the late Yin Dynasty. Enjoy nature beauty of Taigong Island, Fushui villa, water forest, peony garden, Liuxiang hall and four view courtyard in Shanghu scenic area.



Shajiabang Scenic
10mins drive

One of national red revolution tourist attractions, national scenic spot of 5A, national wetland park, can visit traditional education area, aquatic plants, red rock village of local customs, reed marshes labyrinths, recreational center and etc.



Kuncheng Lake
10mins walk/5mins drive

Belongs to Yangcheng Lake, the water system of Taihu Lake basin, includes Zhuangyuan bridge, Yangongdi, way around the lake and other scenic spots.



Inherit Japanese Hospitality

Deliver Sincere Service

おもてなし ・ Omotenashi

WELCOME

Iconic located in Changshu National New & High-tech Industrial Development Zone of Jiangsu Province which is highly acclaimed as The Blessed Land of Jiangnan, Hotel Nikko Changshu is ideal for business travelers to this city as well as the nearby Suzhou.

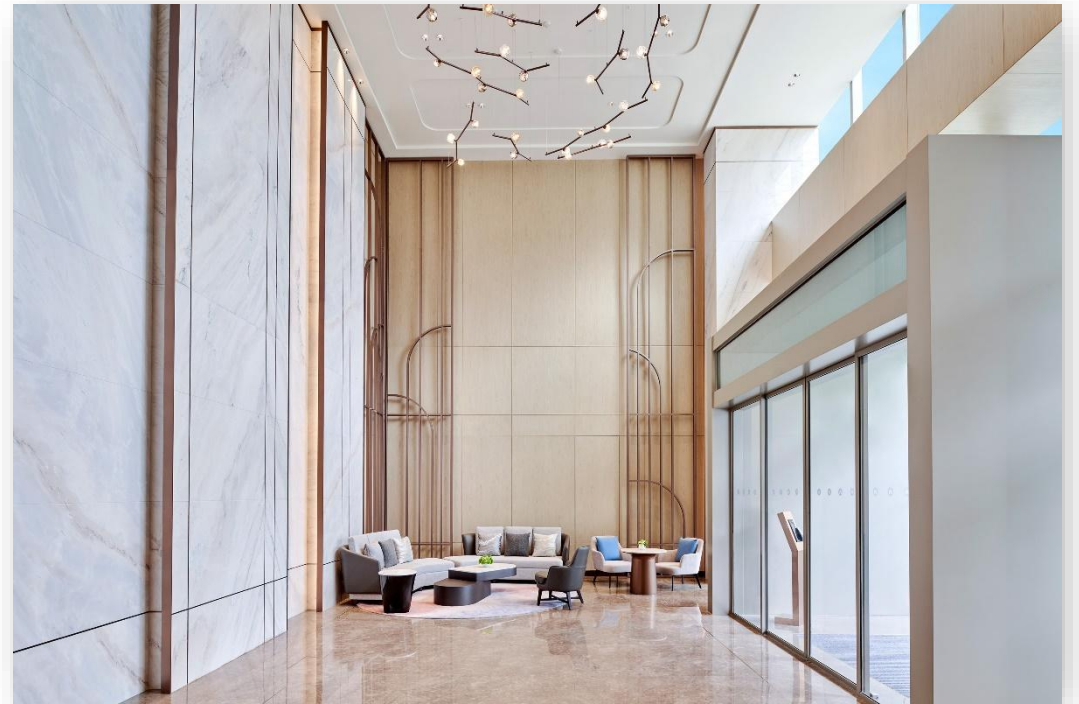
Hotel Nikko Changshu is invested by Kuncheng Lake Construction Investment Co., equipped with 288 modern rooms and suites, 195 serviced apartments, 4 stylish restaurants, over 1,200 m² meeting and event space, outdoor roof garden, indoor swimming pool, kids playroom, Japanese hot tub and card playroom.

Taking a jog along Kuncheng Lake, boating at Shajiabang or shopping in AEON Shopping Mall are options that will make your day, just to name a few. Hotel Nikko Changshu is hidden in the city, where the bustling harmoniously fusion with serenity, providing comfortable and pleasant stay for guests all around the world.

ACCOMMODATION



1F / Hotel Lobby



1F / Harmony Apartment Lobby

ACCOMMODATION

Hotel Rooms

Room Type	Size <m²>	Floor	Room Numbers
Deluxe Room	32	5-19F	91
Superior Room	35		92
Sunsets Lake Scene Room	36		20
Accessible Room	35	5F	1
Executive Room	32	20-25F	30
Executive Premier Room	35		30
Executive Lake Scene Room	36		10
Executive Suite	70	18-25F	13
Royal Suite	145	25F	1



ACCOMMODATION

Unwind *over* Clouds

- Spacious guest room from 32 sq.m.
- Contemporary modern design with Japanese twist
- Floor-to-ceiling windows with views of the bustle city or silent Kuncheng lake
- High-quality linens
- Simmons® mattress
- TOSHIBA 55" flat-screen TV
- Domestic and International TV channels
- TOTO bathroom amenities, separate toilet design, bathtub, switchable glass and automatic intelligent washlet
- Upgrade to Executive Floor guest rooms to enjoy exclusive benefits such as express check in, late check out, coffee machine, happy hour in The Lounge and etc.
- Complimentary Wi-Fi



ACCOMMODATION

Harmony Apartment

Room Type	Size <m²>	Floor	Room Numbers
Studio Room	30	5-27F	21
One Bed Room	45	3-25F	36
	55	5-27F	84
	65	3-27F	22
Two Bed Room	70	10-25F	28
Three Bed Room	88	26-27F	4



ACCOMMODATION

Home Away *from* Home

- Comfortable apartment from 30 sq.m.
- Well-appointed home appliance, including induction cooker, microwave oven, range hood, refrigerator, washer-dryer, water purifier, Kohler smart toilet and etc.
- High-quality linens
- Simmons® mattress
- TOSHIBA 50" flat-screen TV
- Electronic key card access, 24-hour security and CCTV
- Foreign currency exchange service
- Discount on using hotel accommodation, dining, laundry service and meeting rooms
- Massage chair (*applicable only for part of apartments)
- Complimentary Wi-Fi
- Indoor golf simulator room



DINING



Offer a world of unique dining experience,
let's commence a culinary journey
from here.

THE
LOUNGE

The Lounge

📍 1st floor
🏠 10:00-23:30

ALL DAY DINING
SERENA

Serena All Day Dining

📍 1st floor
🏠 Breakfast 6:00-10:00
A-la-carte 10:00-21:30

和
日本料理

Nagomi Japanese Restaurant

📍 1st floor
🏠 Lunch 11:30-14:00
Dinner 17:30-21:30

中国料理
桃李
Toh-Lee
CHINESE RESTAURANT

Toh-Lee Chinese Restaurant

📍 2nd floor
🏠 Lunch 11:30-14:00
Dinner 17:30-21:30

THE LOUNGE

The Lounge

The Lounge is the focal area of our hotel. This elegant, stylish and comfortable area offers freshly baked Japanese style pastries and cakes, premium teas, cocktails and wines.

Total 33 seats.



Serena All Day Dining

Savor in unparalleled dining experience in Serena, as a gourmet marketplace provides local and worldwide flavors. Open kitchen showcase the expert chefs prepare buffet breakfast. A-la-carte menu of international cuisine is available for lunch and dinner. Themed buffet dinner is also available on weekend. Outdoor garden area allowing guests to enjoy dining, sunshine, fresh air and exceptional views at the same time.

Total 124 seats.

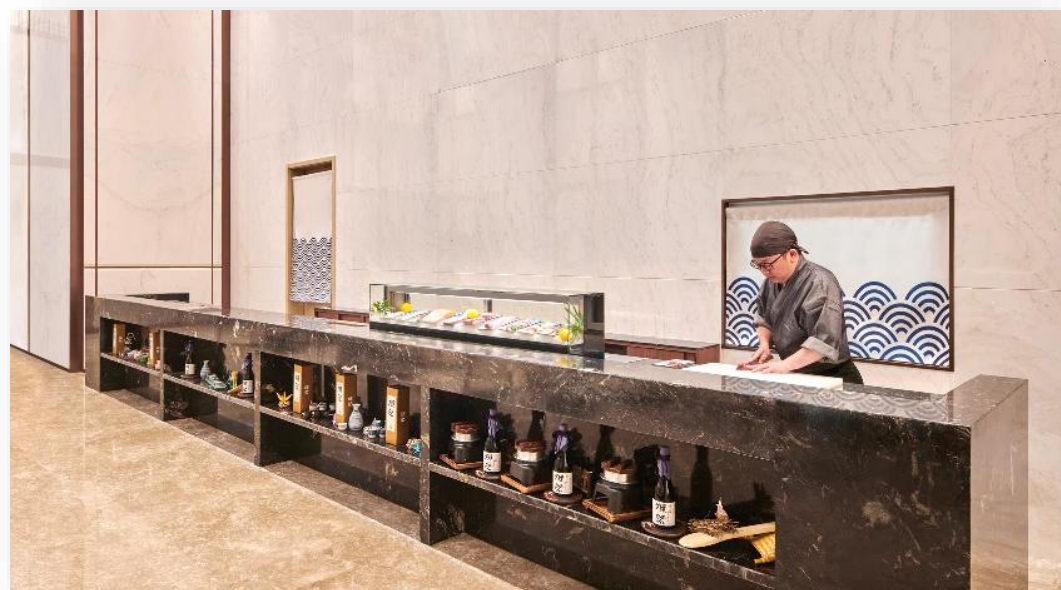




Nagomi Japanese Restaurant

A dedicated Japanese dining area offers authentic Japanese cuisine and bespoke service. The restaurant is an ideal venue for group dining and celebration gathering with four private rooms.

Total 70 seats, 4 private dining rooms, the largest private dining room can accommodate up to 16 persons.



Toh-Lee Chinese Restaurant

This exceptional Chinese restaurant features an ambience integrating traditional and modern décor and design concepts. Using quality seasonal ingredients, its talented chefs are ready to serve guests with a treat of authentic Cantonese cuisines and Changshu flavors.

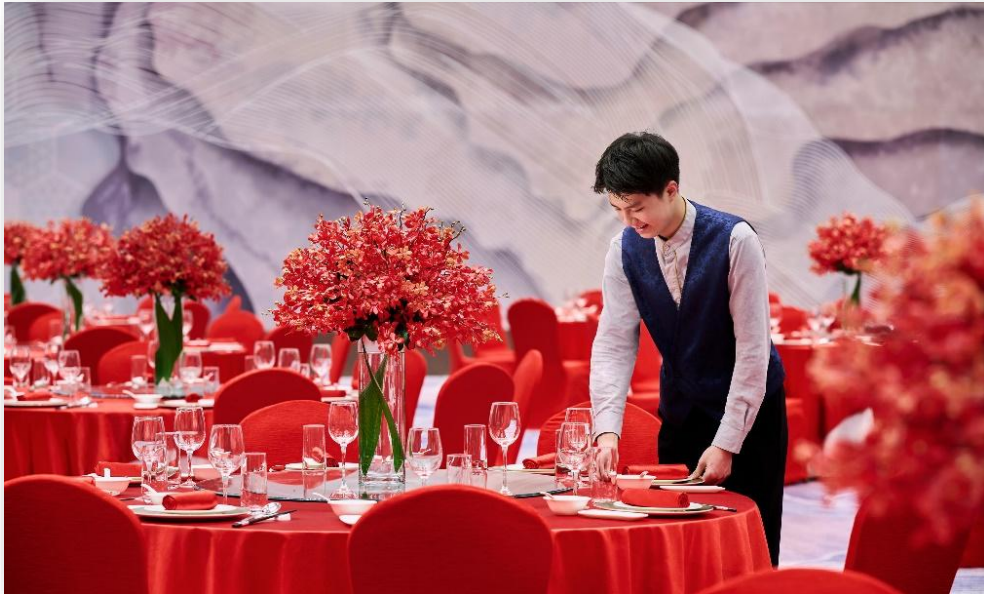
Total 114 seats, 5 private dining rooms, the largest private dining room can accommodate up to 20 persons.





MEETING AND EVENTS

Light-and-airy meeting and event spaces located on 2nd Floor, including 1,000 m² pillar-less Grand Ballroom perfect for wedding, floor ceiling up to 8 meters and can flexible divide into 2 spaces. 4 function rooms and 1 VIP room are available for meetings or smaller group. Each space boasts A/V technology, and event planners are always on hand to assist.



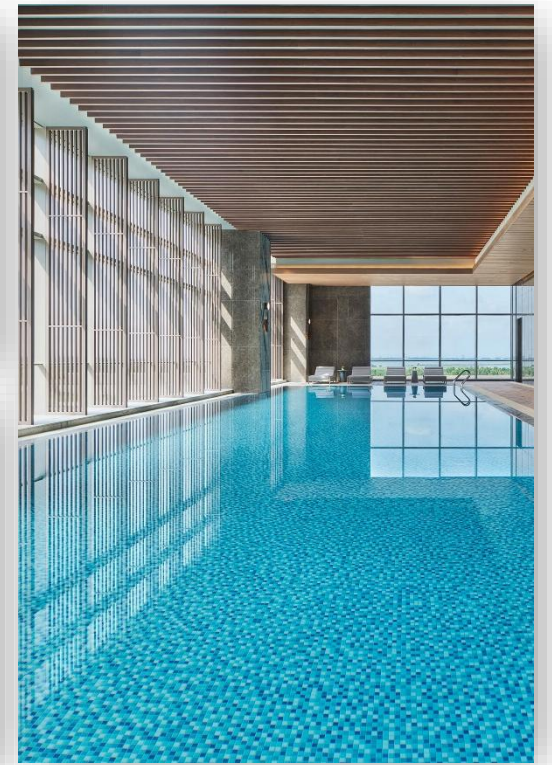
MEETING AND EVENTS

ROOM	SIZE	HEIGHT	CAPACITY				
	m ²	m	Banquet	Theater	Classroom	Cocktail	Square shaped
Grand Ballroom	1,000	7.5	500	800	500	800	180
Grand Ballroom I	500	7.5	250	300	250	325	100
Grand Ballroom II	500	7.5	250	300	250	325	100
Function Room I	46	3.45	12	30	16	30	18
Function Room II	30	3.45	12	18	12	20	12
Function Room III	30	3.45	12	18	12	20	12
Function Room IV	53	3.45	12	30	16	35	18
VIP Room	65	3.45	-	-	-	-	-

REFRESHING

With wraparound floor-to-ceiling windows, dip into infinity lap pool or take an energetic exercise, refresh yourself with vitality. Explore our thoughtful amenities in Fitness Center on 3rd floor, designed with your comfort in mind. Outdoor Roof Garden connect public area of hotel and serviced apartment, capture the prized city view, from sunrise to sunset.

- 24-hour Gym
- Indoor Swimming Pool
- Indoor Golf Simulator Room
- Japanese Hot Tub
- Sauna
- Kids Playroom
- Card Playroom
- Outdoor Roof Garden



CONTACT US

TITLE	NAME	PHONE	E-MAIL
Director of Sales & Marketing	Lydia Li	177 9866 9800	lydia.li@hotelnikkochangshu.com

TRANSPORTATION

Shanghai Pudong International Airport · 150km 130mins drive
Shanghai Hongqiao International Airport · 100km 80mins drive
Sunan Shuofang International Airport · 50km 50mins drive
Changshu Railway Station · 17km 25mins drive
AEON Shopping Mall · 5km 10mins drive

HOTEL INFO

Hotel Address · No.18 Yijia Road, Changshu High-tech Industrial Development Zone,
Jiangsu Province, China, 215500
Tel · 86-0512-5220-1888
Fax · 86-0512-5257-5888
Mail · guestservice@hotelnikkochangshu.com
Web · www.hotelnikkochangshu.com